

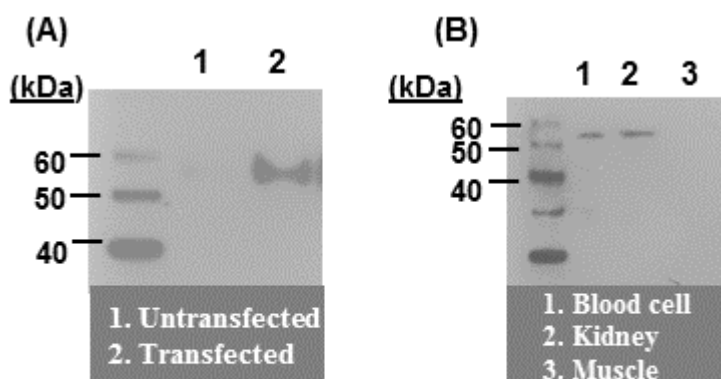
POLYCLONAL ANTIBODY DATASHEET



cluster of differentiation 4 (CD4)

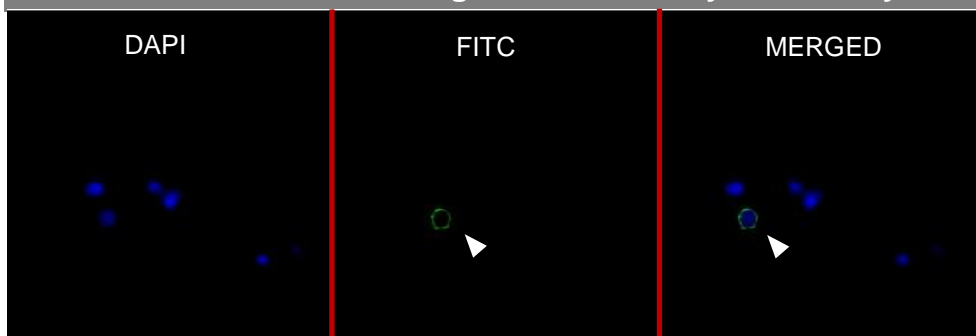
Target species	Zebrafish (danio rerio)
Target antigen	cluster of differentiation 4 (CD4)
Description	Rabbit polyclonal antibodies specific for Zebrafish CD4
Purification	Unpurified
Immunogen	Peptide sequence
Positive Control	ELISA- Peptide immunogen Western Blot- CD4 tranfected CHO cells IHC- M. marinum infected zebrafish FACS- Isolated leukocytes IF- Isolated leukocytes
Cross-reactivity	N/A

Applications		Recommended Usage Conditions
ELISA	✓	1/20000 dilution
Western Blot	✓	1/2000 dilution
IHC	✓	1/1000 dilution
FACS	✓	1/200 dilution
IF	✓	1/5000 dilution

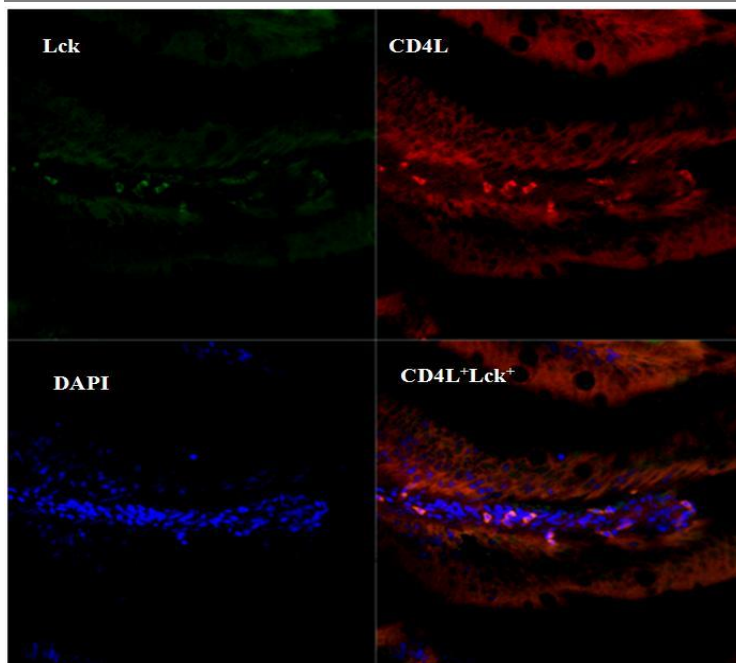


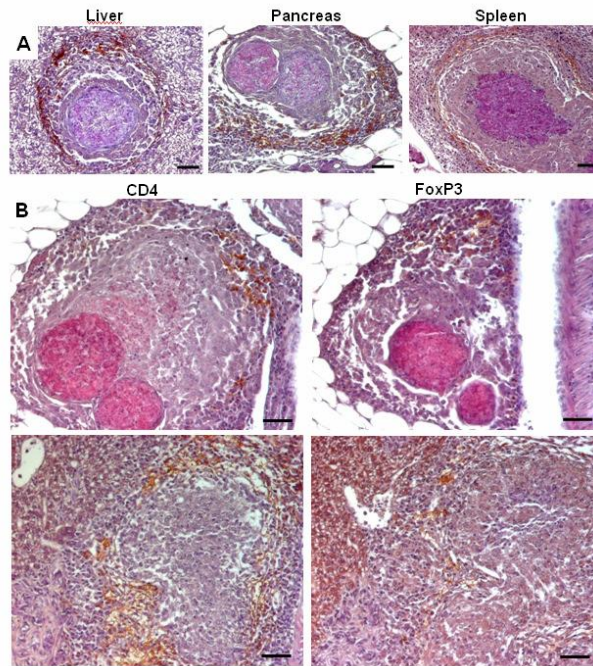
Western blot using CD4 antibody

Immunofluorescent staining of CD4 antibody on leukocytes



Double immunofluorescence staining of CD4 antibody on peripheral lymphocytes in gut





- (A) CD4+ cells surround granulomas in the liver, spleen and pancreas of zebrafish infected for 28 days
- (B) CD4 and FoxP3 antibodies stain the same areas of both necrotic and solid granulomas in zebrafish infected for 28 days with ESX-5 deficient *M. marinum*. Scale bars are 50 μm .