

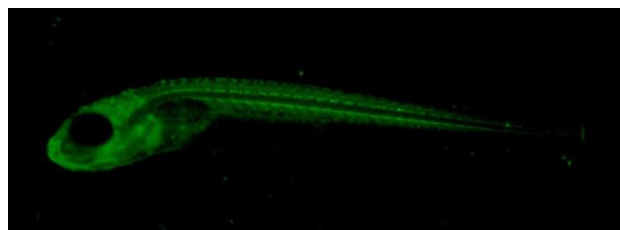
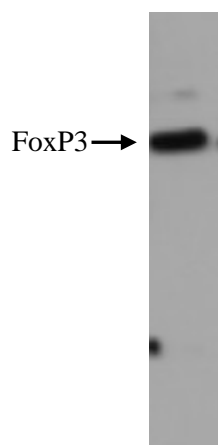
POLYCLONAL ANTIBODY DATASHEET



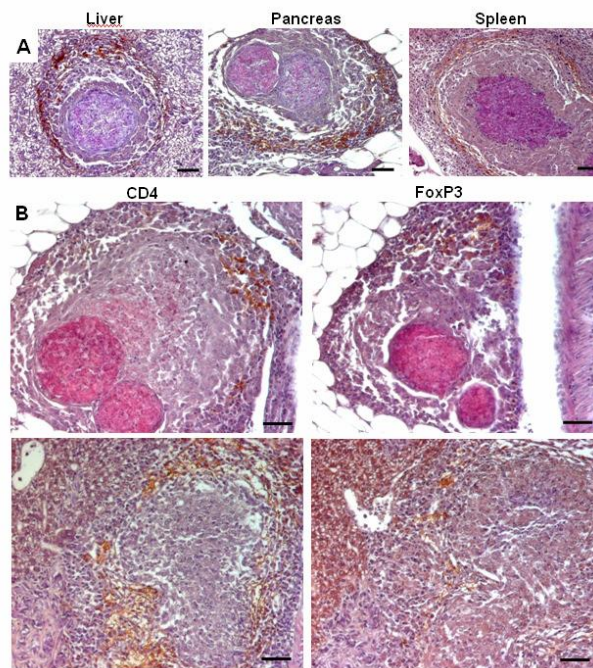
forkhead box P3a/b (FOXP3a/b)

Target species	Zebrafish (<i>danio rerio</i>)
Target antigen	forkhead box P3 (FOXP3)
Description	Rabbit polyclonal antibodies specific for Zebrafish FOXP3
Purification	Unpurified
Immunogen	14 amino acids synthetic peptide (shares 80% identity with foxp3b)
Positive Control	ELISA - Peptide immunogen Western Blot - whole organism lysate IHC - <i>M. marinum</i> infected zebrafish IHC - zebrafish embryo
Cross-reactivity	N/A

Applications		Recommended Usage Conditions
ELISA	✓	1/1000 dilution
Western Blot	✓	1/500 dilution
IHC-whole organism	✓	1/500 dilution (Inoue & Wittbrodt, 2011)
IHC- paraffin embedded	✓	1/500 dilution



Anti-FoxP3 staining whole-mount zebrafish embryo



- (A) CD4+ cells surround granulomas in the liver, spleen and pancreas of zebrafish infected for 28 days
- (B) CD4 and FoxP3 antibodies stain the same areas of both necrotic and solid granulomas in zebrafish infected for 28 days with ESX-5 deficient *M. marinum*. Scale bars are 50 μm .