

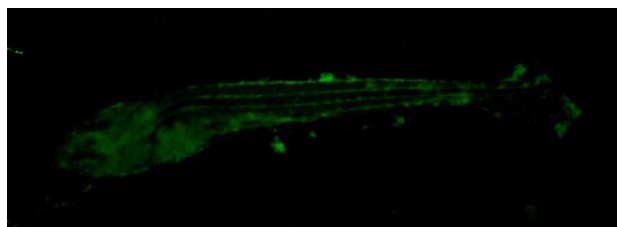
MONOCLONAL ANTIBODY DATASHEET



Tumor suppressor p53 (P53)

Target species	Zebrafish (danio rerio)
Target antigen	Tumor suppressor p53 (P53)
Isotype	IgG1, κ
Clone	V5P4H6*B3
Purification	unpurified; supplied as hybridoma supernatant
Immunogen	ovalbumin-conjugated 10 amino acids synthetic peptide
B Cell Donor	BALB-c mouse
Fusion Partner	Ag 8563
Positive Control	ELISA- Peptide immunogen Western Blot- whole organism lysate IHC- zebrafish embryo
Cross-reactivity	N/A

Applications		Recommended Usage Conditions
ELISA	✓	neat dilution
Western Blot	Not detected	Not detected
IHC	✓	1/3 dilution (Inoue & Wittbrodt, 2011)



Anti-p53 staining whole-mount zebrafish embryo